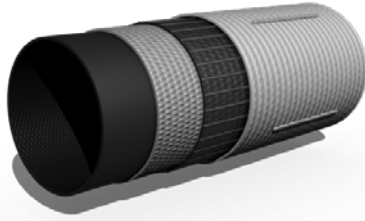




FLEXIGOM[®] RISER



Performance

- Flexible and highly-resistant hose for continuous use in wells with multi-phase pumps.
- Ideal for working with water with a pH of 4 to 9.
- The hose does not degrade or produce rust. It doesn't give any flavour.
- Highly resistant to traction, supporting the weight of the pump itself.
- Easy to place in and take out of wells. Its double fabric structure prevents the hose from bending.
- A hose designed for working in high-pressure wells.
- Easy to handle and roll up.

Uses

- Water wells.
- Substitution of rigid well pipes.
- Civil works.
- Compressed air.
- Special high-pressure processes.

Construction

Interior and middle layer:

Specially-formulated black nitrile rubber, extruded through the circular fabric. Minimal flow loss thanks to its smooth interior wall.

First fabric reinforcement:

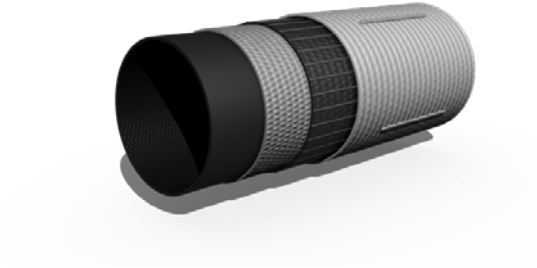
Circular weaved outer layer made from high tenacity polyester thread specially designed to withstand high pressure. No defects (broken threads, knots, etc.)

Second fabric reinforcement:

Circular weaved outer layer going in the opposite direction made from high tenacity polyester thread specially designed to protect the interior hose. No defects (broken threads, knots, etc.). It has hooking wires placed along the hose so electric cables can be fastened to it using flanges.



FLEXIGOM[®] RISER



Technical characteristics

DIAMETER		WEIGHT	THICKNESS	WORKING PRESSURE	BREAKAGE PRESSURE	TENSILE STRENGTH	MAX. LOAD
INCHES	MM.	GR/M.	MM.	BARS	BARS	KG.	KG.
2"	51,0 - 53,5	≤ 925	4,5 - 4,9	30	≥ 90	5500	1000
3"	75,5 - 78,0	≤ 1350	4,6 - 5,0	30	≥ 85	7300	1750
4"	101,5 - 104,0	≤ 1900	4,8 - 5,2	25	≥ 80	10600	33000
6"	151,5 - 154,0	≤ 2950	4,9 - 5,3	21	≥ 62	14600	62000